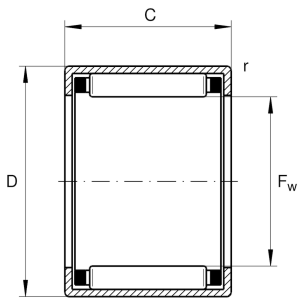
**HK2520** **Drawn cup needle roller bearing open end**

Drawn cup needle roller bearings with open ends HK, to DIN 618/ISO 3245

Technical information**Your current product variant**

Lubricant	Without
Lubrication hole	Without
Coating	Without
Sealing	Without

Main Dimensions & Performance Data

F_w	25 mm	Under roller diameter
D	32 mm	Outside diameter
C	20 mm	Width
C_r	19,900 N	Basic dynamic load rating, radial
C_{0r}	33,000 N	Basic static load rating, radial
C_{ur}	4,300 N	Fatigue load limit, radial
n_G	10,200 1/min	Limiting speed
$n_{G \text{ Grease}}$	6,100 1/min	Limiting speed for grease lubrication
n_{gr}	7,400 1/min	Reference speed
$\approx m$	33 g	Weight

Dimensions

C_1	20 mm	Width, outer ring
r_{\min}	0.8 mm	Minimum chamfer dimension








Temperature range

T _{min}	-30 °C	Operating temperature min.
T _{max}	140 °C	Operating temperature max.

Additional information

SD25X32X4	Sealing ring
G25X32X4	Sealing ring 2
LR20X25X20,5	Suitable inner rings LR
IR20X25X20,5-XL	Suitable inner rings IR

Characteristics

	Radial load
	Grease Lubrication
	Oil Lubrication
	Not sealed
	Small design envelope